



A.S.K DIAMOND DRILLING LTD

Diamond Drilling & Floor Sawing

- Chasing
- Core Drilling
- Floor Sawing
- Wire Sawing
- Concrete Bursting
- Track/Wall Sawing
- Hydraulic Crunching



A.S.K DIAMOND DRILLING LTD

Sian Business Centre, Stonebridge Road, Northfleet, Gravesend, Kent DA11 9BA

T: +44 (0)1474 322 855 F: +44 (0)1474 365 329

Email: enquiries@ask-diamonddrilling.co.uk

www.ask-diamonddrilling.co.uk

Sian Business Centre, Stonebridge Road, Northfleet, Gravesend, Kent DA11 9BA

T: +44 (0)1474 322 855 F: +44 (0)1474 365 329

Email: enquiries@ask-diamonddrilling.co.uk

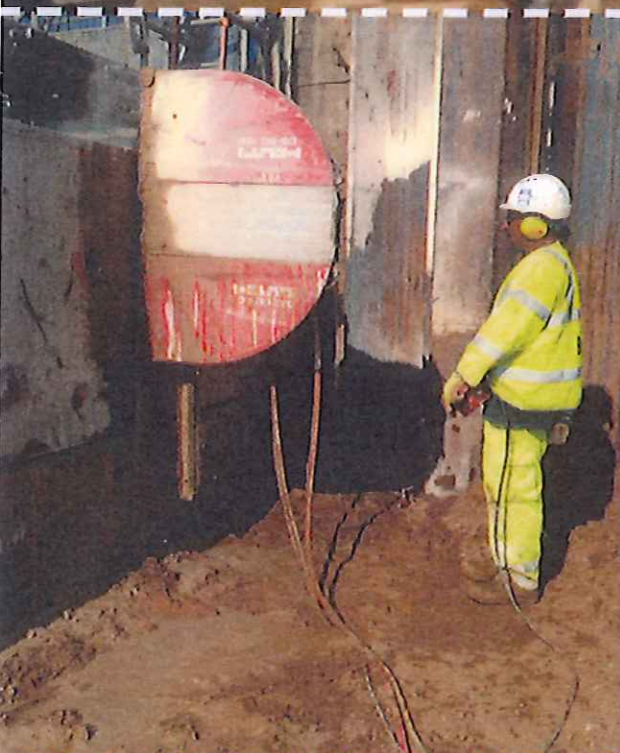
www.ask-diamonddrilling.co.uk



Diamond Drilling

Diamond Drilling is the most efficient method used to cut holes and slots from 8mm to 1000mm. Openings to virtually unlimited depths can be drilled through all types of construction materials to accommodate a range of requirements and services.

- Stitch drilling (a series of inter-linked holes is used for large or irregular shaped openings).
- Wet and dry cutting.
- Electric or hydraulic powered systems.
- Low noise output.
- Virtually unlimited depth.
- Dust free.
- Operated in horizontal, vertical and inverted positions.
- Suited for use in confined spaces.
- Maintains structural integrity.



Track / Wall Sawing

The fastest and most precise method for cutting opening in concrete structures such as walls, floors and on inclined surfaces.

The system consists of a track mounted cutting head and diamond blade, which is powered by a hydraulic or electric motor.

The cut is made as the blade is progressively fed into the concrete making a series of passes until the required depth is achieved.

- Precise cuts.
- Remote controlled.
- Smooth cut face (little or no making good required).
- Fast cutting speed.
- Flush cutting available.
- Capable of cutting depth up to 1000mm.
- Purpose built track saws for all applications.
- Create openings in vertical and steep inclines.



Floor Sawing

Floor sawing is quick and efficient method used to cut horizontal flat surfaces such as roads, pavements, runways, car parks, bridges and concrete slabs.

Consists of a circular diamond blade mounted on a spindle and powered by diesel, petrol or 3 phase electrical source depending on site restrictions.

Typically used for cutting large openings and surface repairs where fast cutting speeds are required.

- Purpose built floor saws with diesel, petrol or electric power sources.
- Blade types and power requirements to suit every application.
- Smooth cut face (little or no making good required).
- Capable of cutting depths up to 600mm
- Fast cutting speed over flat surfaces.
- Precise cut depths.

Wire Sawing

This versatile and fast cutting method is typically used for extracting large sections of heavily reinforced concrete. Ideally suited where complex sections are encountered for example; bridge sections, columns and beams.

A beaded diamond wire is fed through a series of pulleys whilst a constant pulling force is applied. The wire can cut through most construction materials including heavily reinforced concrete.

- Removal of large and complex concrete structures.
- Horizontal, vertical and angled cuts.
- Confined space working.
- Fume free and low noise.
- Almost unlimited depths.
- Fast cutting.
- Smooth cut face.
- Non-percussive.

Hand-held Saws

A.S.K. diamond Drilling Limited has a large stock of ring saws, partner saws and cut off saws available for works. These hand held portable devices are ideal for construction and demolition sites where access or workspace is limited.

- Capable of cutting depth up to 275mm.
- For small scale straight line cuts.
- Hand held / portable.
- Quick and efficient.

Concrete Bursting

A quiet and efficient method of controlled demolition used to remove large concrete structures such as foundations, pillars, bearers and concrete walls. Burster heads are inserted into pre-drilled holes and a hydraulic force applied to induce a controlled crack in the concrete.

- Safe alternative to conventional breaking.
- Eliminates Hand Arm Vibration Syndrome (HAVS).
- Electric, diesel or petrol powered.
- Bursting power ratios of up to 2,000 tonnes.
- Used in the removal of large concrete structures.
- Quiet.
- Non-percussive.

Concrete Crunching

These hand held or machine mounted units are extremely efficient, emission free, vibration free, noise free and require no water.

Typically used to quickly crush and remove suspended floor slabs, walls, upstands and stairways, reducing the concrete to rubble.

- Safe alternative to conventional breaking.
- Eliminates Hand Arm Vibration Syndrome (HAVS).
- Fast and efficient.
- Dust free.
- Non-percussive.
- Reinforcement can be left exposed if required.
- Near silent operation (suitable for sensitive environments).

